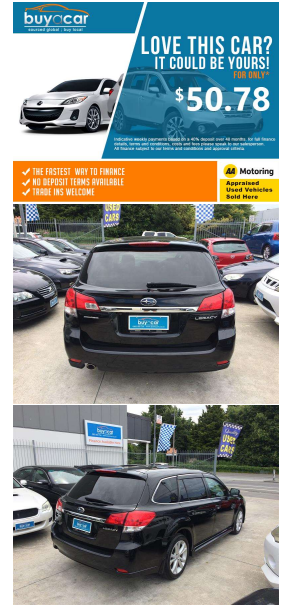
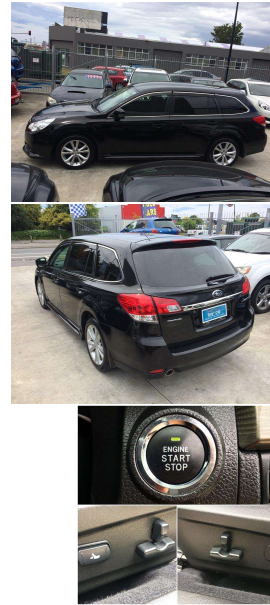


2012 Subaru Legacy 2.5i S PACKAGE



VEHICLE INFORMATION

Cash Price

Includes GST

\$11,990

+ on-road-costs of \$350

Finance this vehicle from only

\$50.78

per week*

Total Amount Payable

\$15,498.50



provident insurance

Gain peace of mind with Mechanical Breakdown Insurance. Ask us how.

Body

Station Wagon

Odometer

120,913 km

Engine

2500 cc

Fuel Type

Petrol

Transmission

Auto

Wheels

-

VIN

7AT0GF0BX18003586

Reg No.

-

Ext Colour

Black

History

-

Seats

-

Interior

-

Audio

-

Stock ID

2045

Exterior Features

Interior Features

Mechanical Features



Buy a Car, Phone 0800 800 766, Email rory@buyacar.co.nz
352 Ferry Road, Waltham, Christchurch 8011, New Zealand
www.buyacar.co.nz

* Finance calculation based on a 48 month term, 40% deposit and with an example annual fixed interest rate of 14.95%. Actual interest rate may be higher or lower. Includes an establishment fee of \$510.00. Full term total amount payable of \$15,498.50. Estimate only, not an offer of finance. Terms, conditions and lending criteria apply.